



 **CENTENNIAL LAKES**
OFFICE PARK

centenniallakes.com



WATCH  THE VIDEO



Centennial Lakes Office Park

7650 Edinborough Way Suite 175
Edina, MN 55435

Development by



Leasing by



Bob Revoir | 952-893-7586
bob.revoir@cushwake.com

Dan Wicker | 952-893-8254
dan.wicker@cushwake.com



FIVE PHASE 834,000 SF

PREMIER CLASS A OFFICE

ON-SITE AMENITIES

- Free, fully equipped conference rooms (in each building) with seating for 22-60 people
- Tavern23 Restaurant and patio (tavern23mn.com)
- Mykenna's café serving breakfast and lunch (Phase IV)
- Micro Market & Lounge (Phase V)
- On-site property management
- Security guard service 24/7
- Tenant Experience Coordinator
- Electric car charging stations (Phase III)
- Locker rooms/showers (Phase II, IV, V)
- BOMA 360 Designated Building

AMENITIES ADJACENT TO THE PARK

- City of Edina's Centennial Lakes Park which consists of 24 acres, 1.5 miles of paved walking paths, amphitheater, paddle boat rental, ice skating, 18-hole bent grass putting course, lawn games, & farmers market
- Complete fitness center (pool, running track, and full gym) at Edinborough Park
- More than 20 dining and fast casual options located within 1 mile of the park
- Adjacent to Nine Mile Regional Bike Trail
- Nearby hotels: The Westin Edina Galleria, Hilton Minneapolis Bloomington, and Doubletree by Hilton

Occupancy	91% Leased
Floor Plates	22,000-26,000
Year Built	1997-2000
Parking Ratio	<ul style="list-style-type: none"> • 4.05 stalls/1,000 sf • Ramp and reserved parking

centenniallakes.com



CLICK A SUITE NUMBER TO SEE FLOOR PLAN

CENTENNIAL LAKES I

7701 France Avenue South

Suite 250	7,015 sf
Suite 325	3,565 sf (Avail. 10/1/2026)
Suite 340	1,995 sf

CENTENNIAL LAKES II

7601 France Avenue South

Suite 500	9,799 sf
-----------	----------

CENTENNIAL LAKES III

3601 West 76th Street

Suite 50	1,985 sf (Avail. 12/1/2026)
Suite 190	4,516 sf
Suite 250	2,245 sf
Suite 275 Spec Suite	4,198 sf
Suite 400	9,483 sf

CENTENNIAL LAKES IV

7650 Edinborough Way

Suite 200	2,573 sf
Suite 245	8,307 sf
Suite 350	4,898 sf
Suite 450	7,655 sf
Suite 725/750	14,632 sf

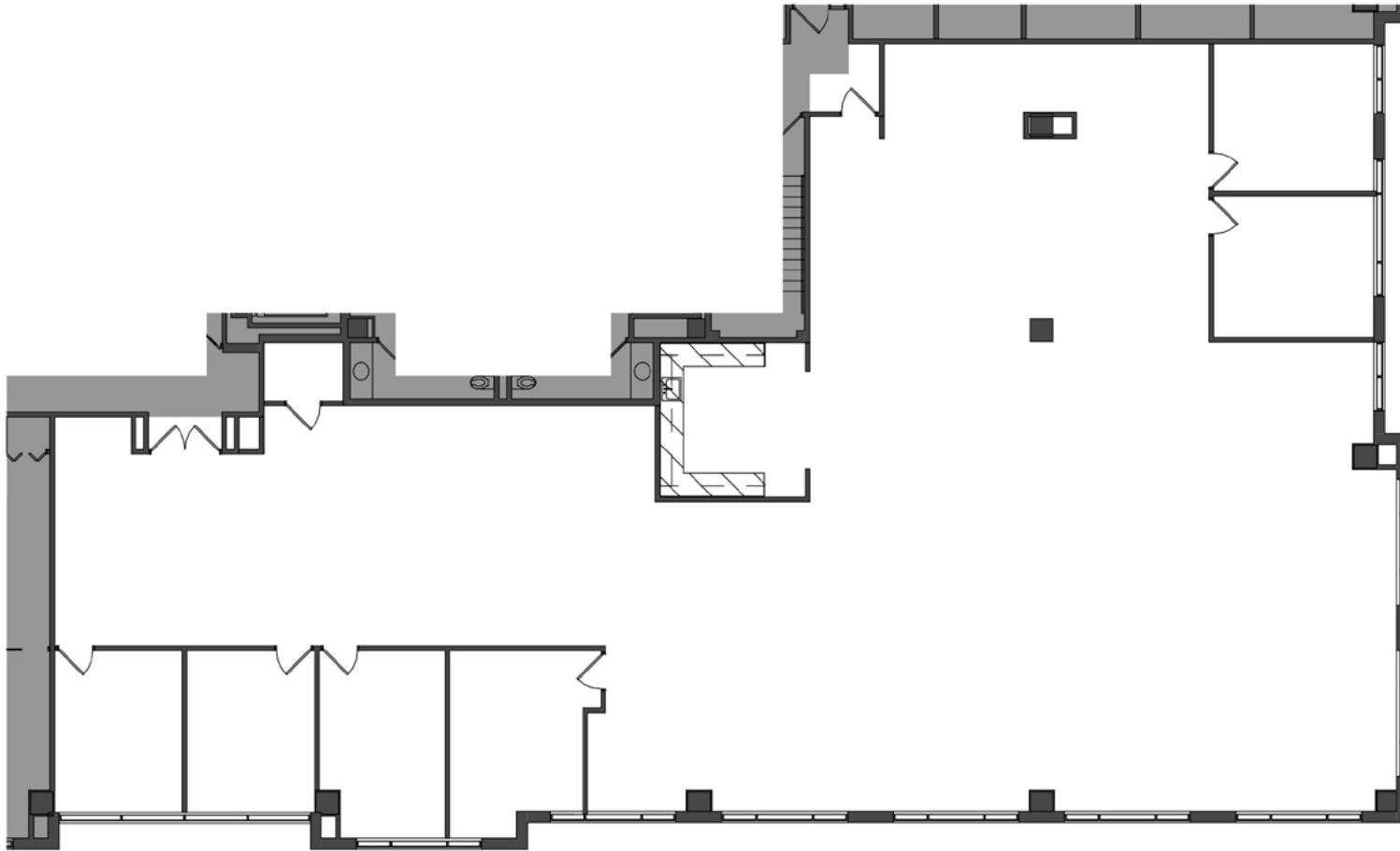
CENTENNIAL LAKES V

3600 Minnesota Drive

Suite 50	4,417 sf (Avail. 10/1/2026)
Suite 175	2,067 sf (Avail. 12/1/2026)

CENTENNIAL LAKES I
7701 France Avenue South

Suite 250 | 7,015 sf

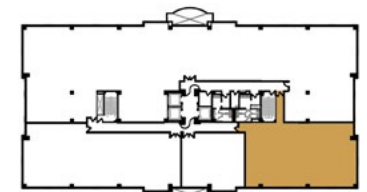
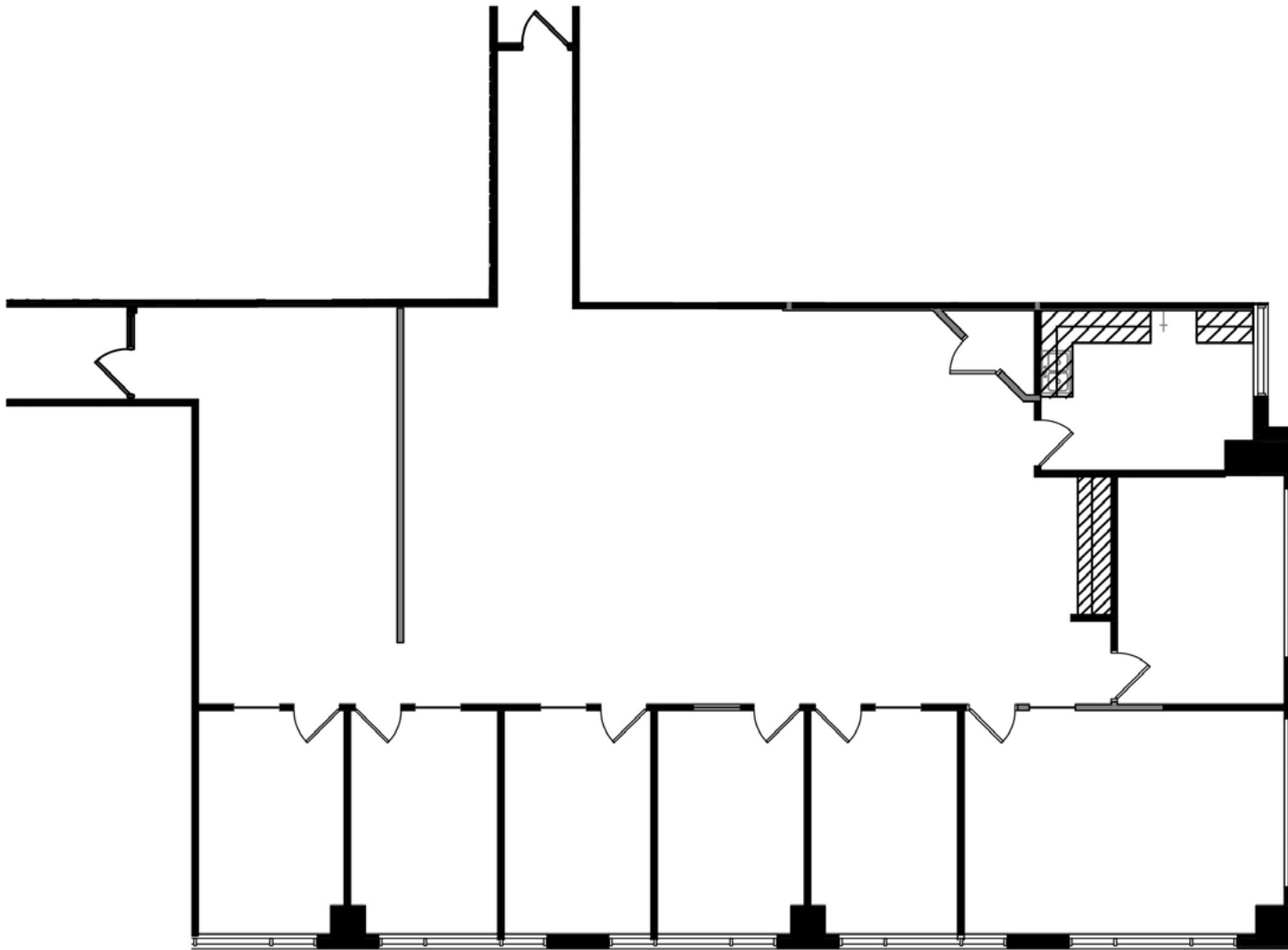


KEY PLAN - 2ND FLOOR

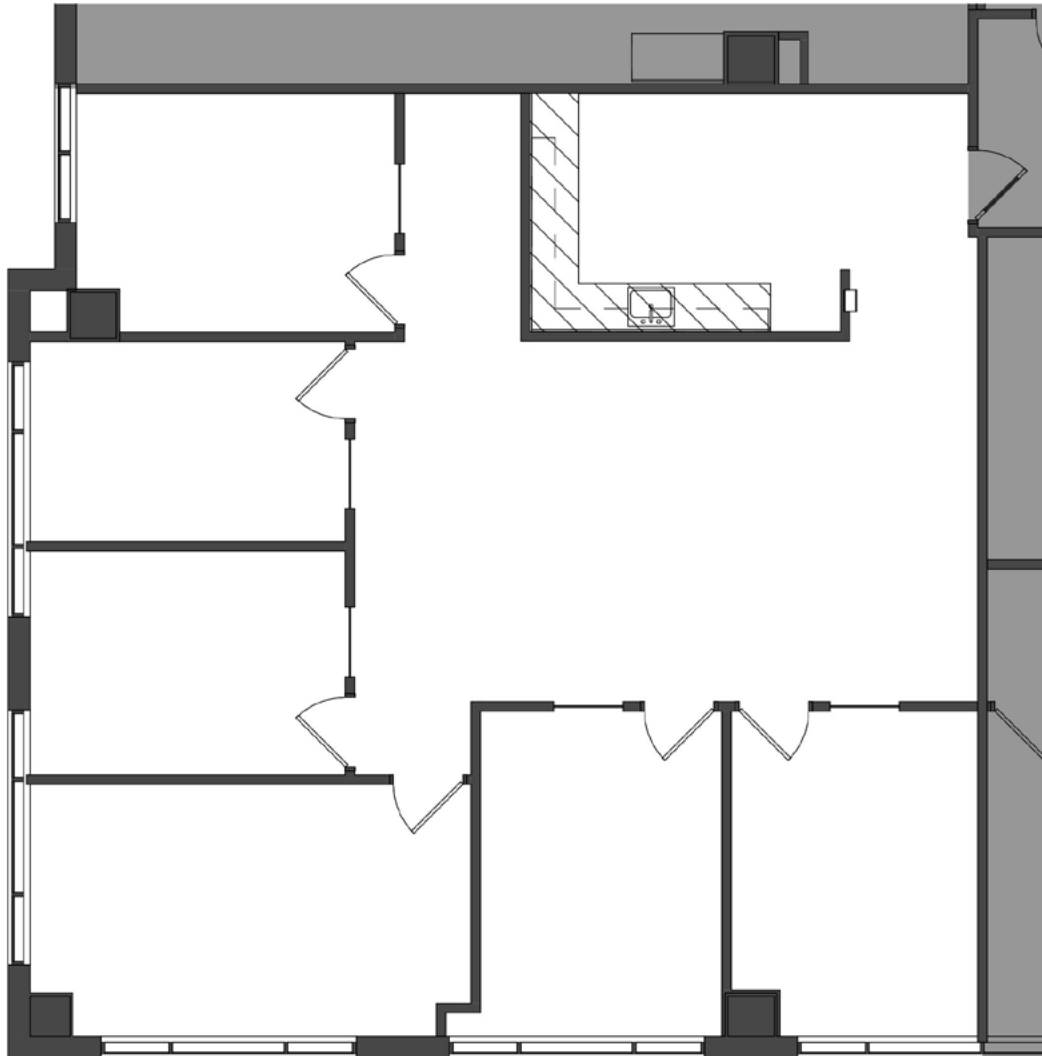


CENTENNIAL LAKES I
7701 France Avenue South

Suite 325 | 3,565 sf
(Available 10/1/2026)

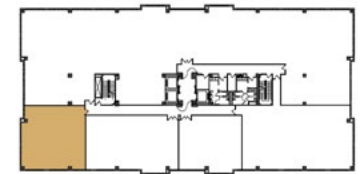


KEY PLAN - 3RD FLOOR



CENTENNIAL LAKES I
7701 France Avenue South

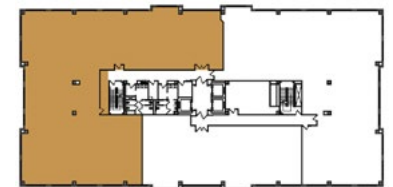
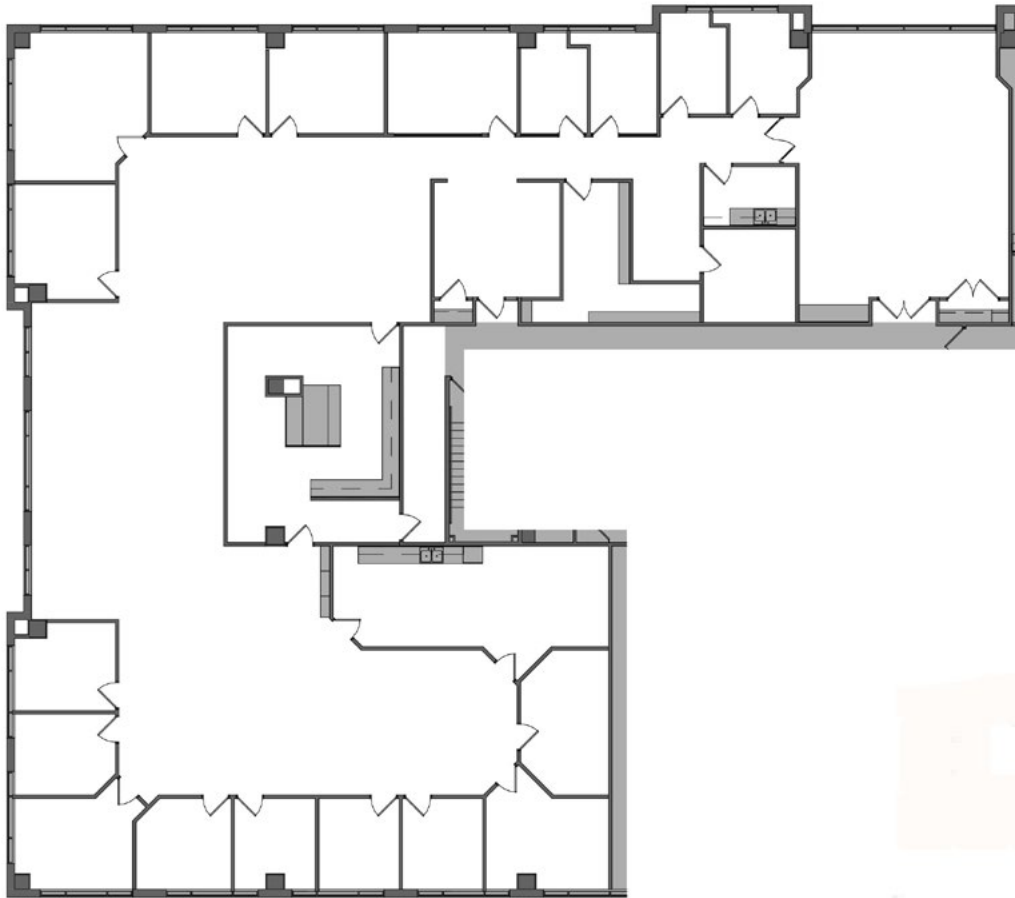
Suite 340 | 1,995 sf



KEY PLAN - 3RD FLOOR

CENTENNIAL LAKES II
7601 France Avenue South

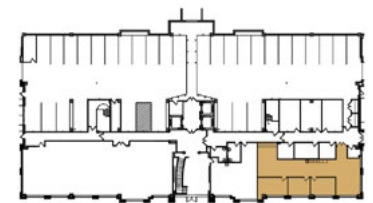
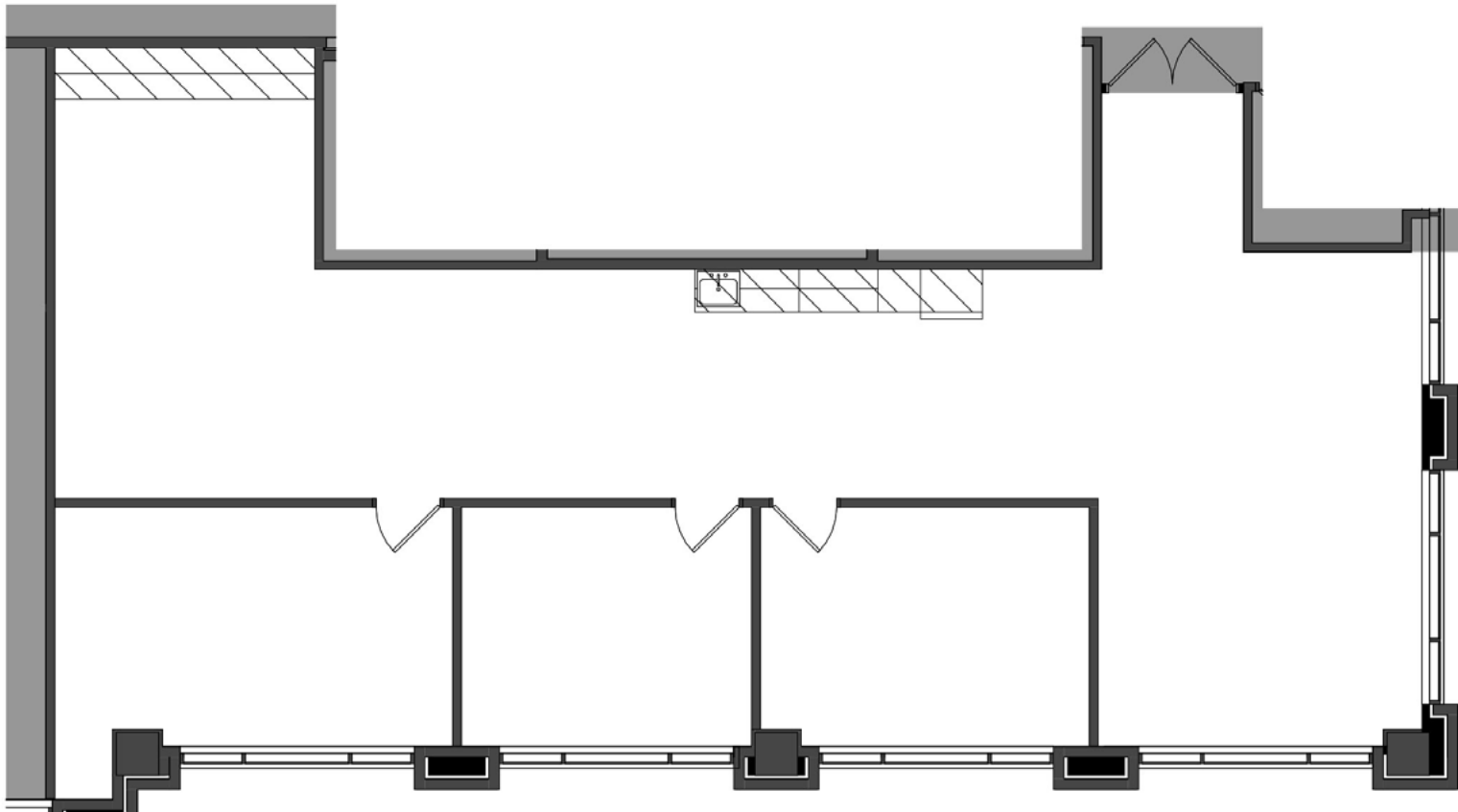
Suite 500 | 9,799 sf



KEY PLAN - 5TH FLOOR

CENTENNIAL LAKES III
3601 West 76th Street

Suite 50 | 1,985 sf
(Available 12/1/2026)

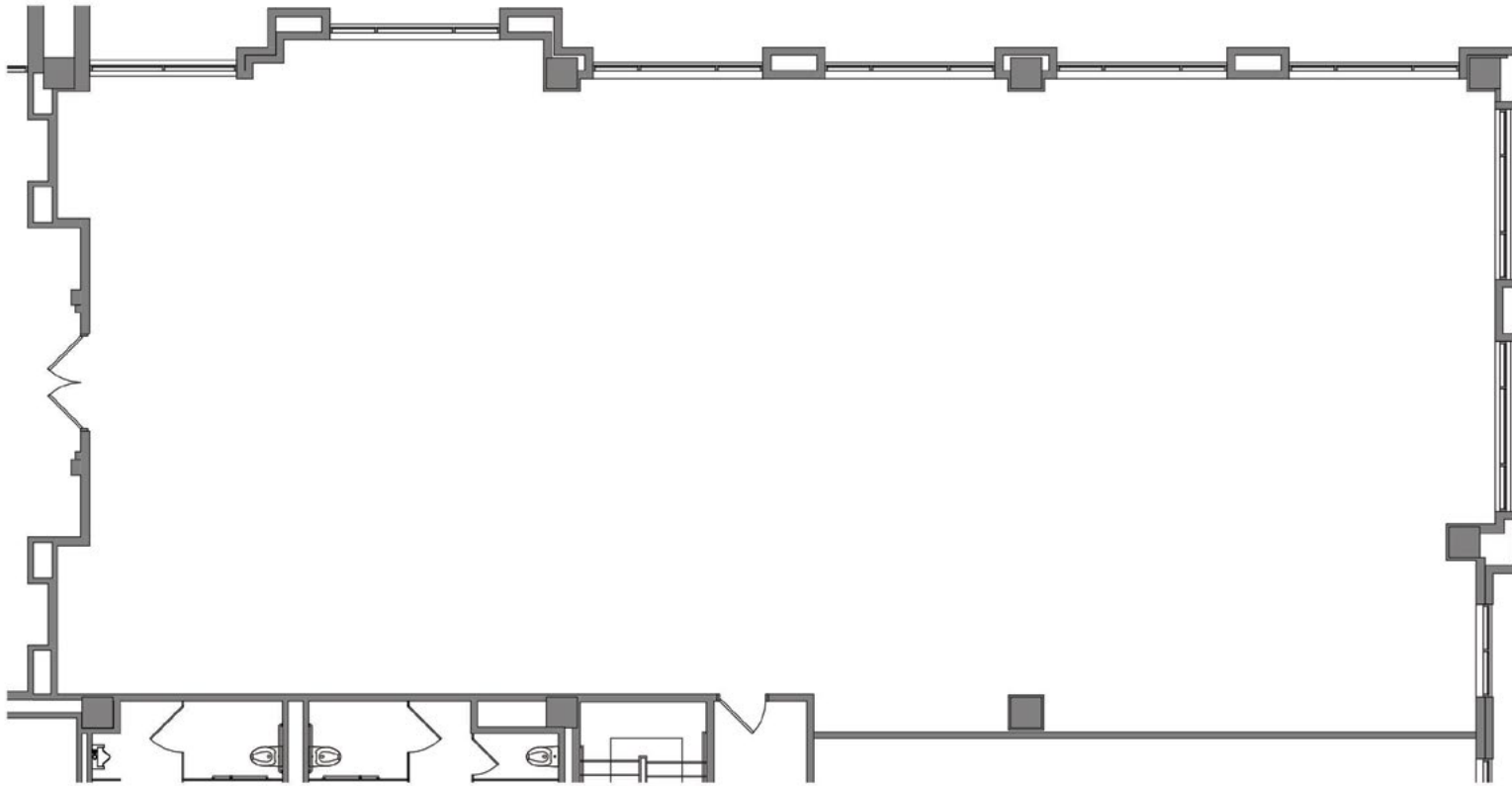


KEY PLAN - LOWER LEVEL

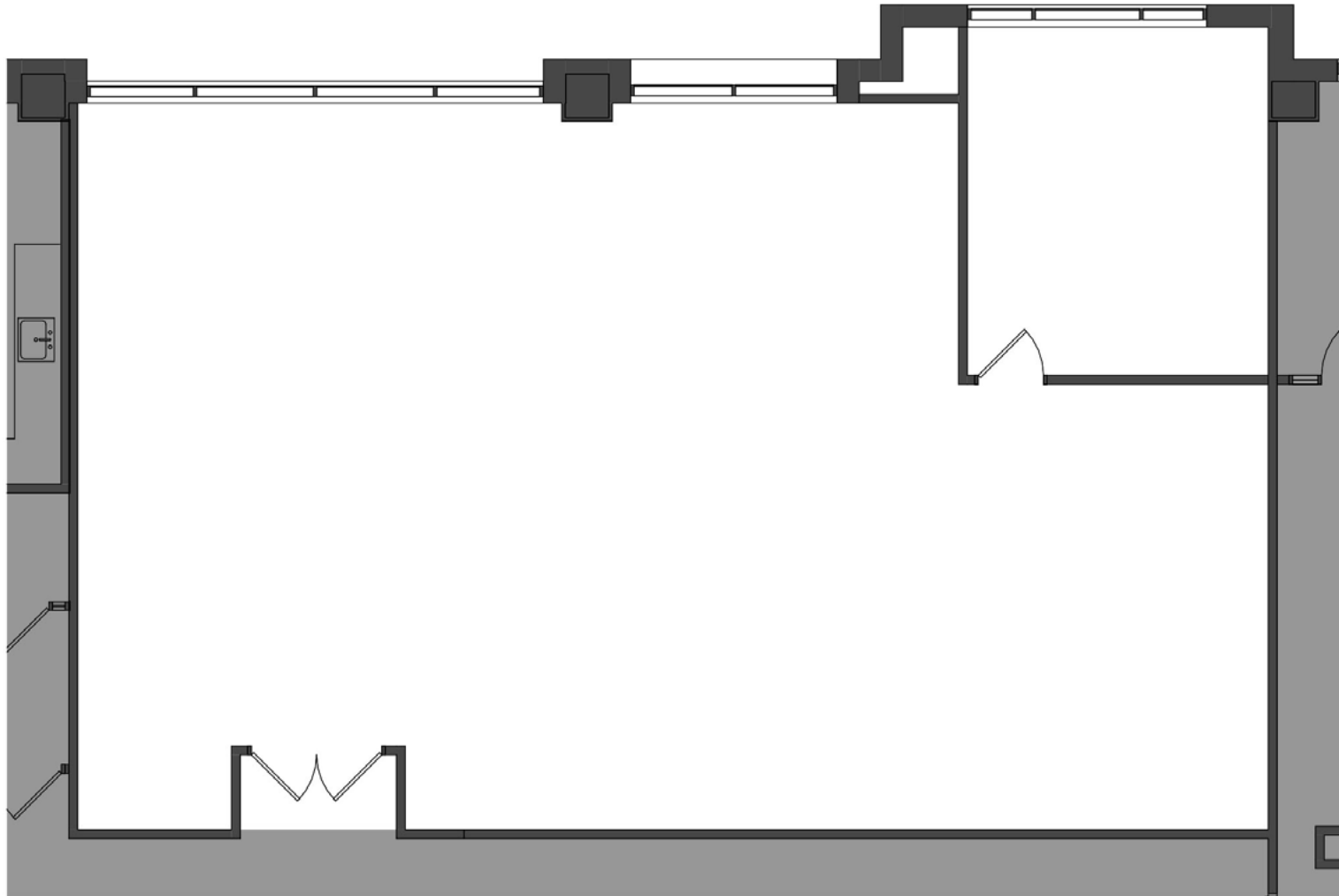
CENTENNIAL LAKES III

3601 West 76th Street

Suite 190 | 4,516 sf

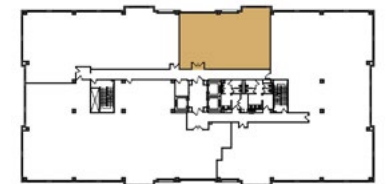


KEY PLAN - 1ST FLOOR



CENTENNIAL LAKES III
3601 West 76th Street

Suite 250 | 2,245 sf

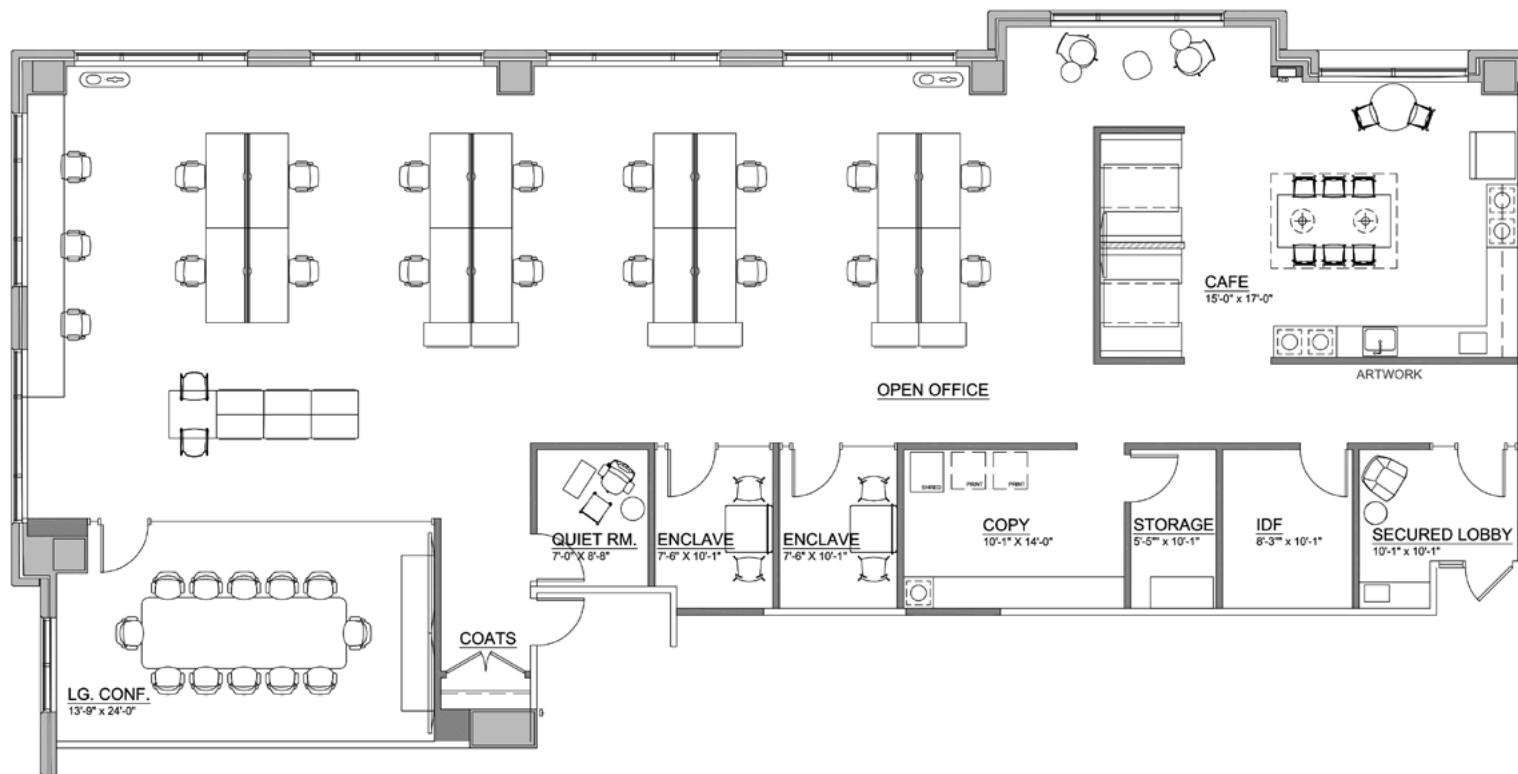


KEY PLAN - 2ND FLOOR

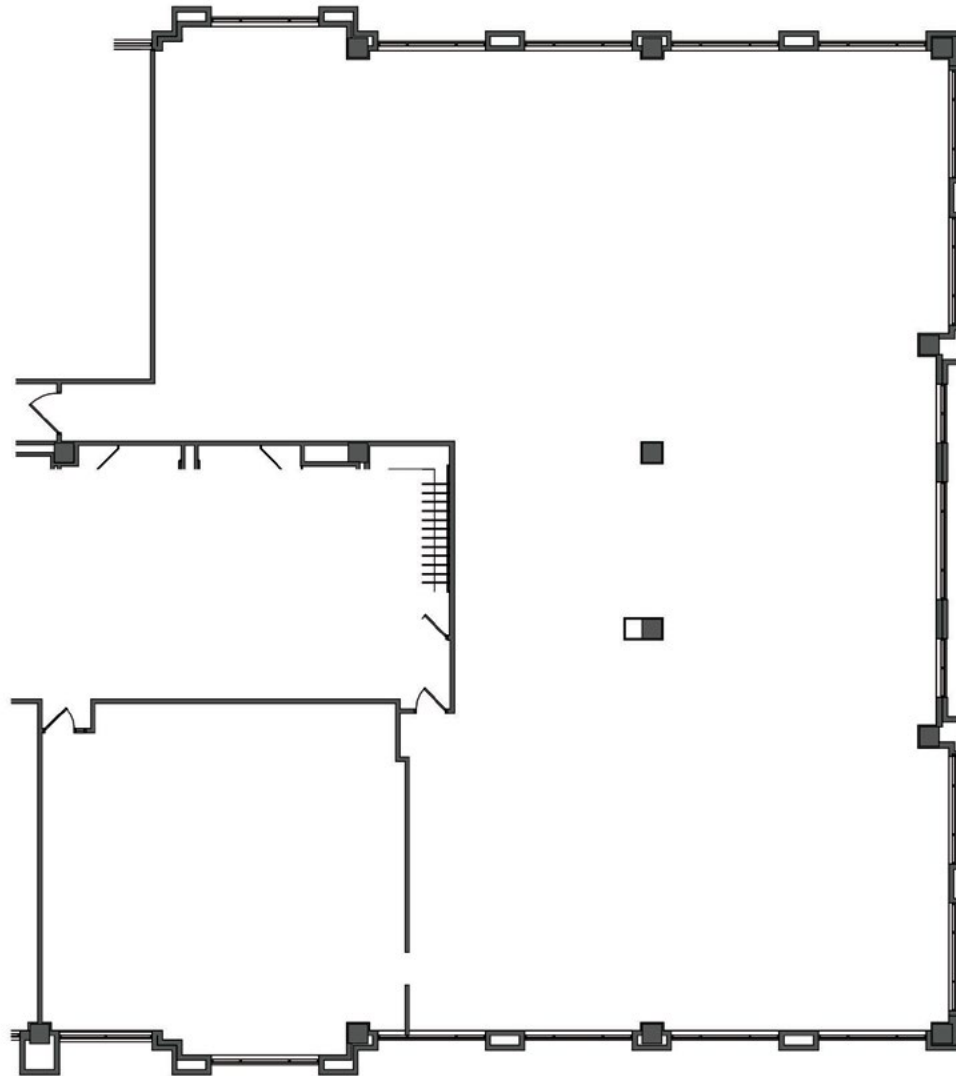


CENTENNIAL LAKES III
3601 West 76th Street

Suite 275 4,198 sf
Spec Suite



KEY PLAN - 2ND FLOOR



CENTENNIAL LAKES III

3601 West 76th Street

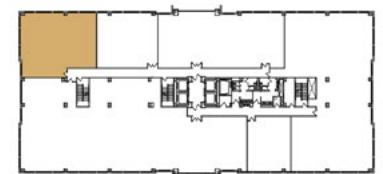
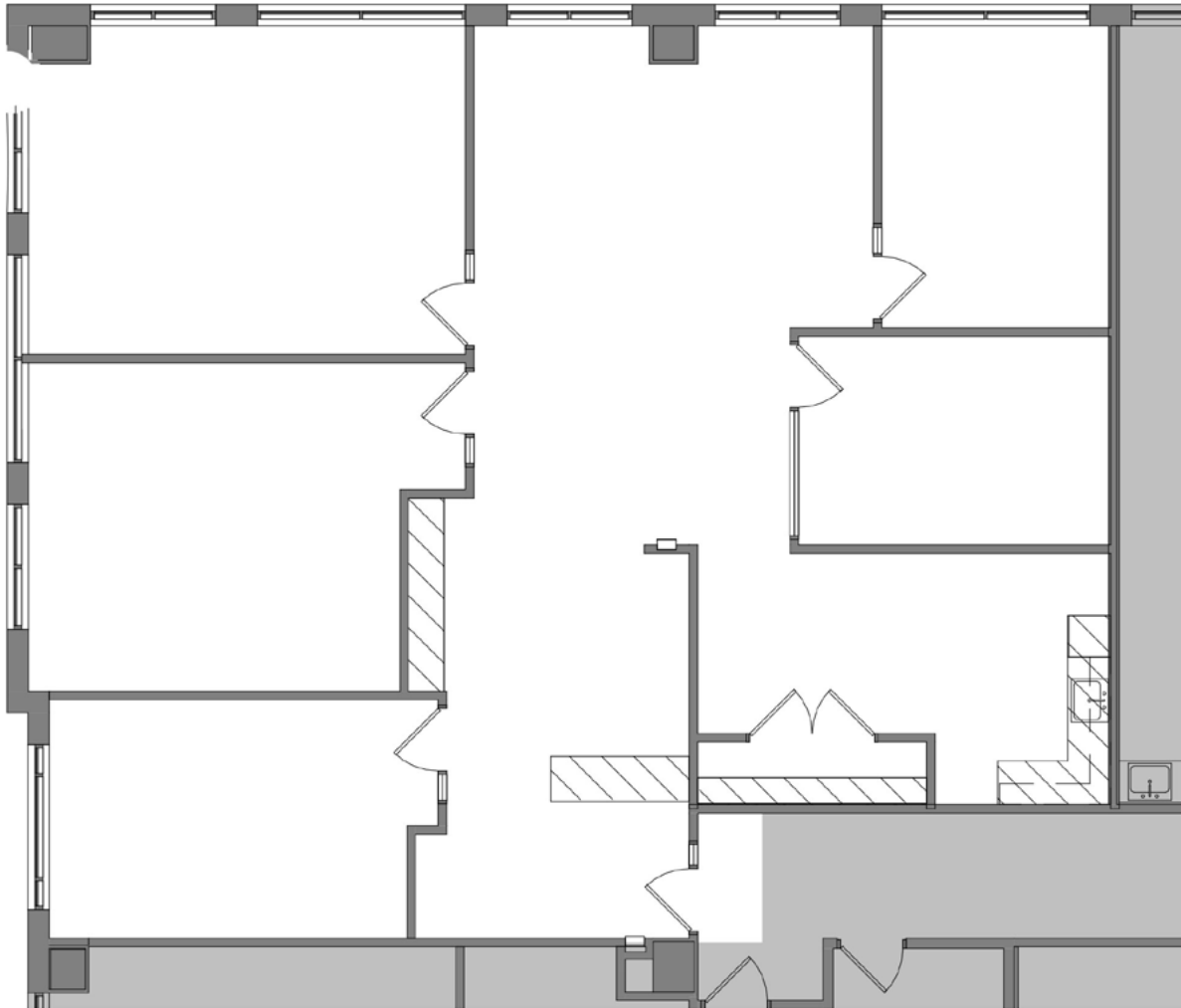
Suite 400 | 9,483 sf



KEY PLAN - 4TH FLOOR

CENTENNIAL LAKES IV
7650 Edinborough Way

Suite 200 | 2,573 sf

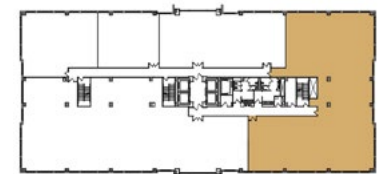
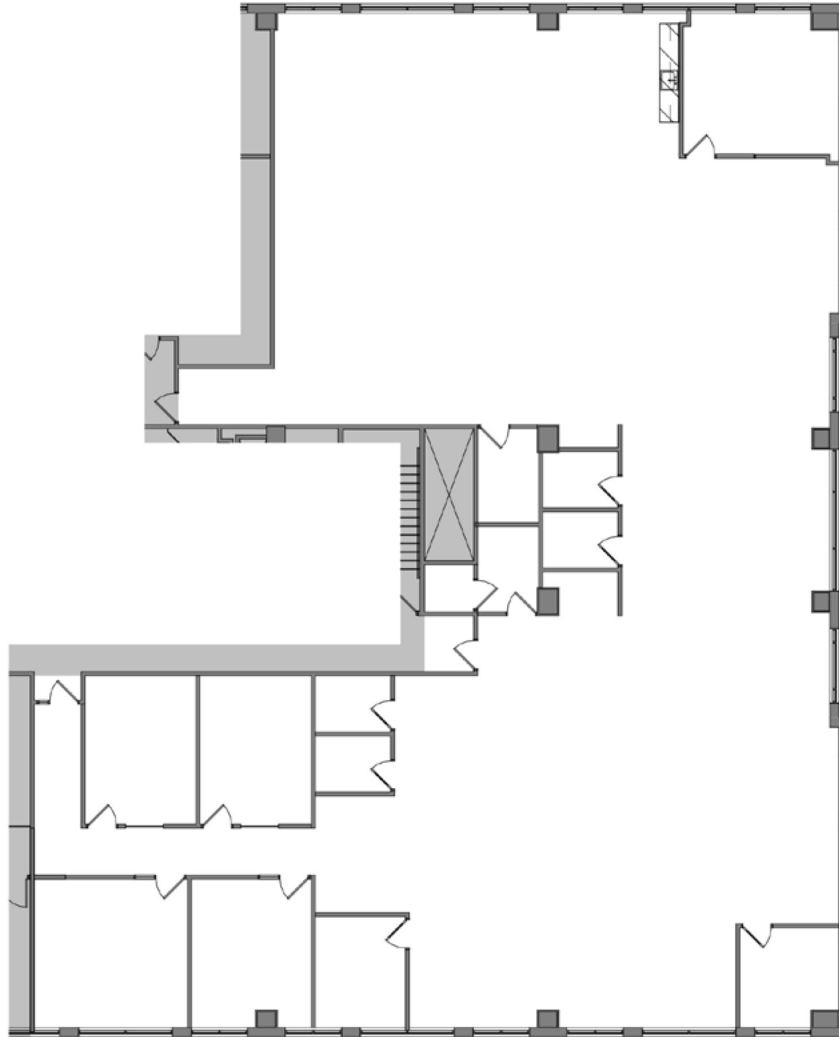


KEY PLAN - 2ND FLOOR

CENTENNIAL LAKES IV

7650 Edinborough Way

Suite 245 | 8,307 sf

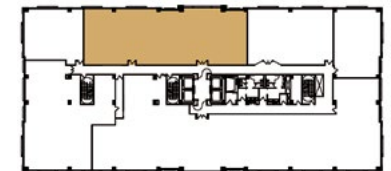
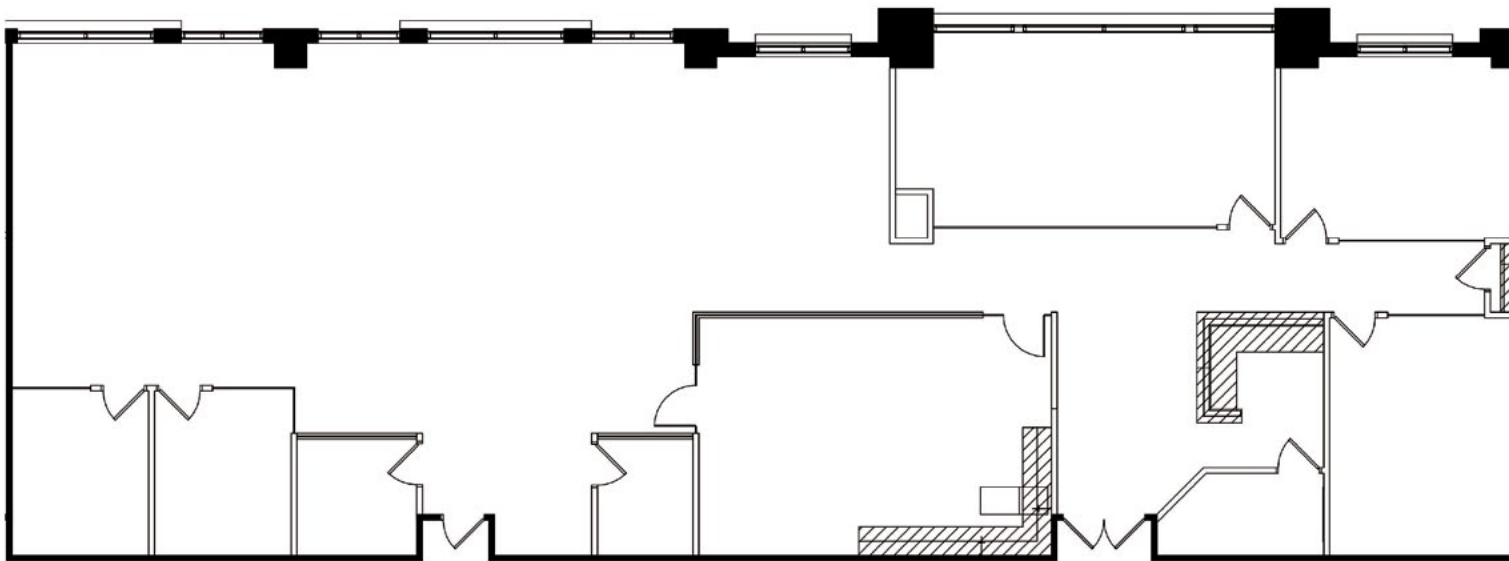


KEY PLAN - 2ND FLOOR

CENTENNIAL LAKES IV

7650 Edinborough Way

Suite 350 | 4,898 sf

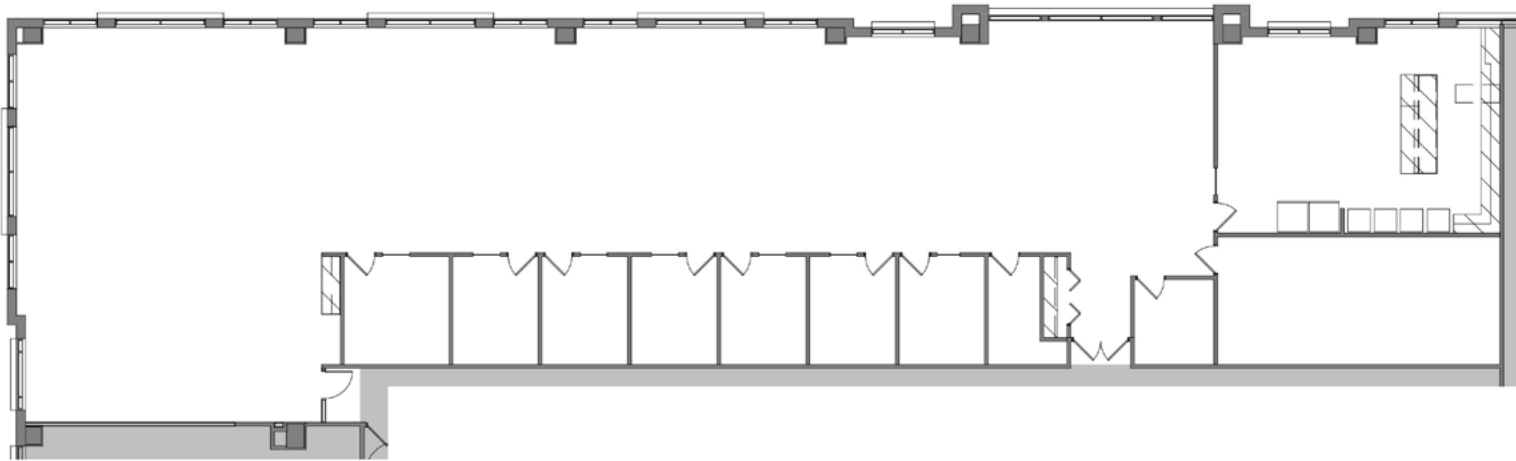


KEY PLAN - 3RD FLOOR

CENTENNIAL LAKES IV

7650 Edinborough Way

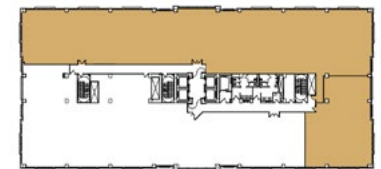
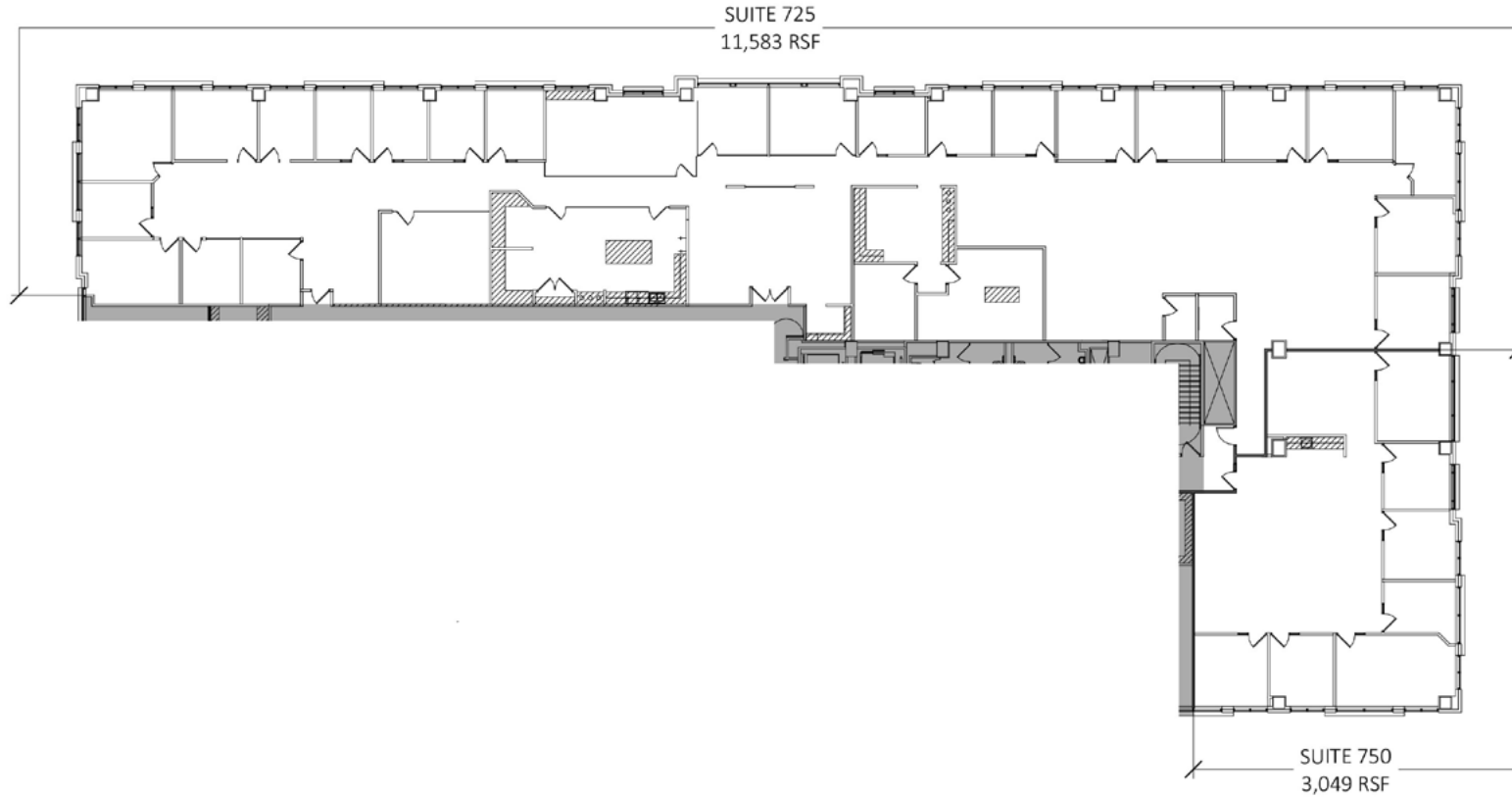
Suite 450 | 7,655 sf



KEY PLAN - 4TH FLOOR

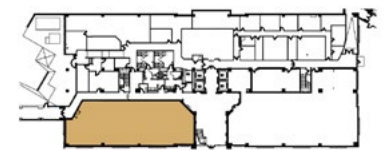
CENTENNIAL LAKES IV
7650 Edinborough Way

Suite 725/750 | 14,632 sf



CENTENNIAL LAKES V
3600 Minnesota Drive

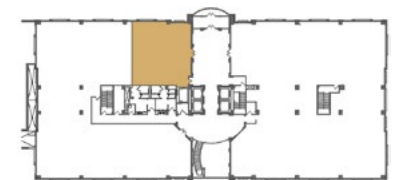
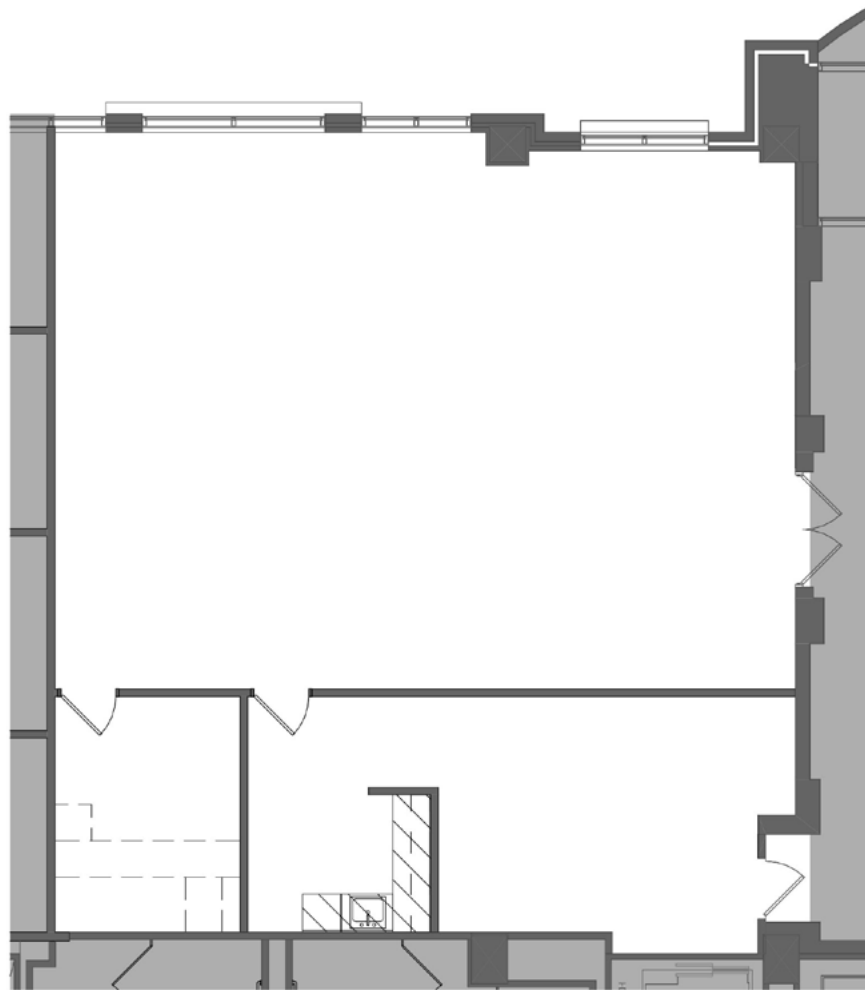
Suite 50 | 4,417 sf
(Available 10/1/2026)



KEY PLAN - LOWER LEVEL

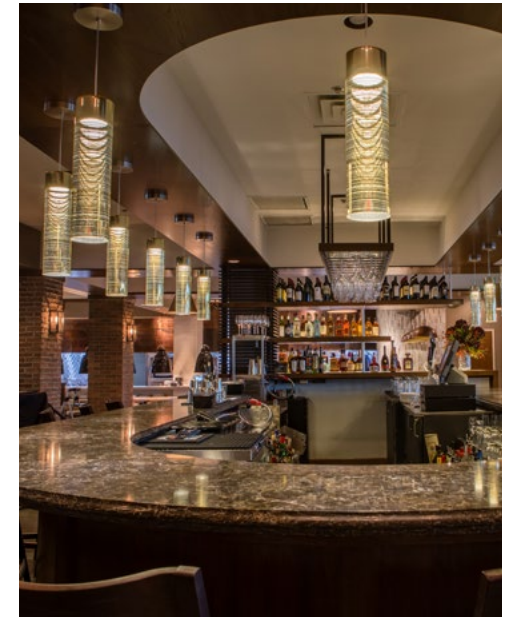
CENTENNIAL LAKES V
3600 Minnesota Drive

Suite 175 | 2,067 sf
(Available 12/1/2026)

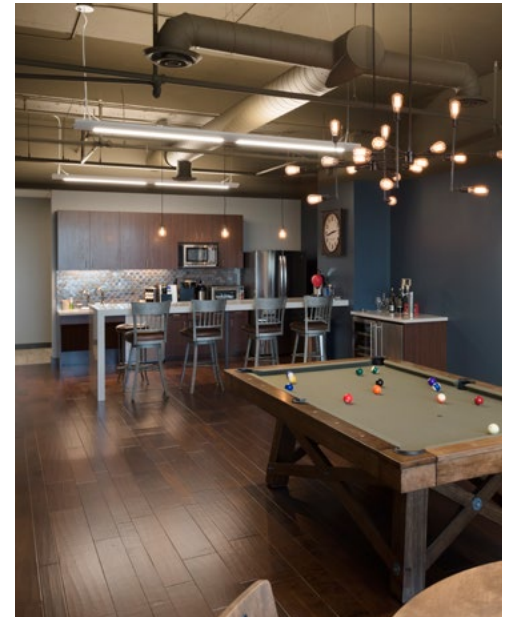


KEY PLAN - 1ST FLOOR





centenniallakes.com





EDINA, MINNESOTA - 494 AND FRANCE AVENUE

centenniallakes.com